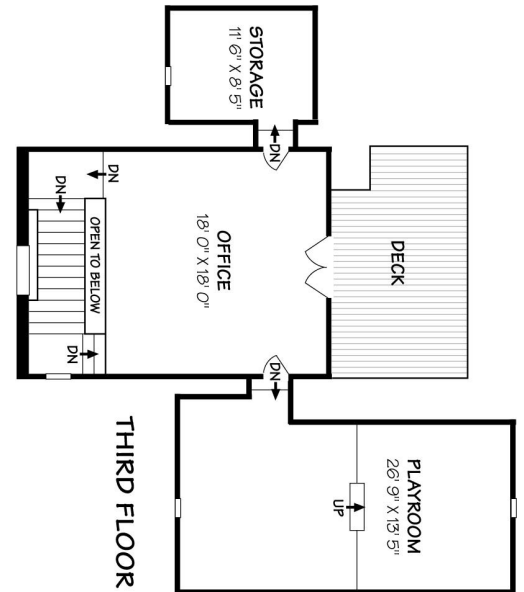
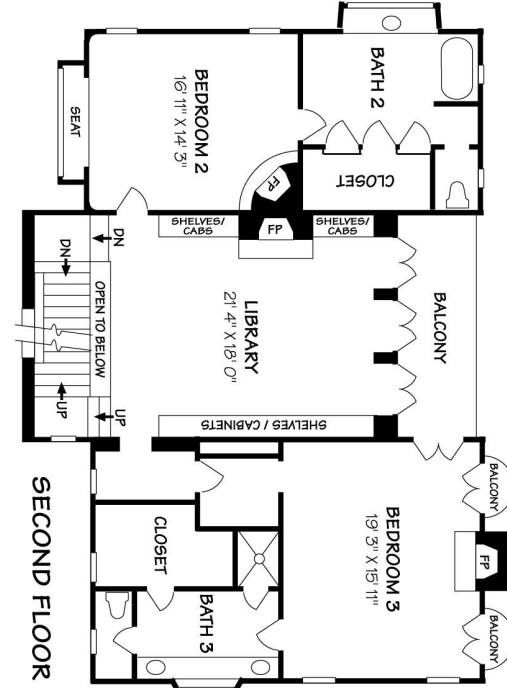
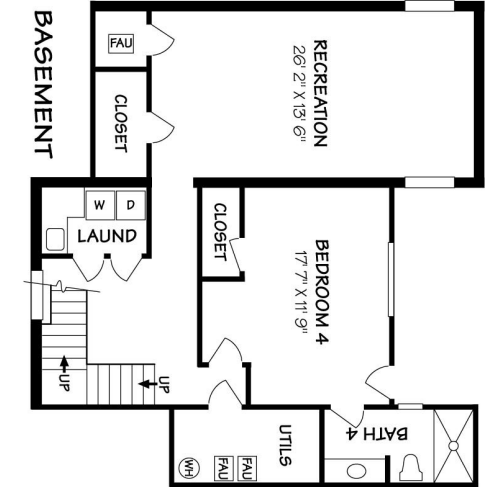
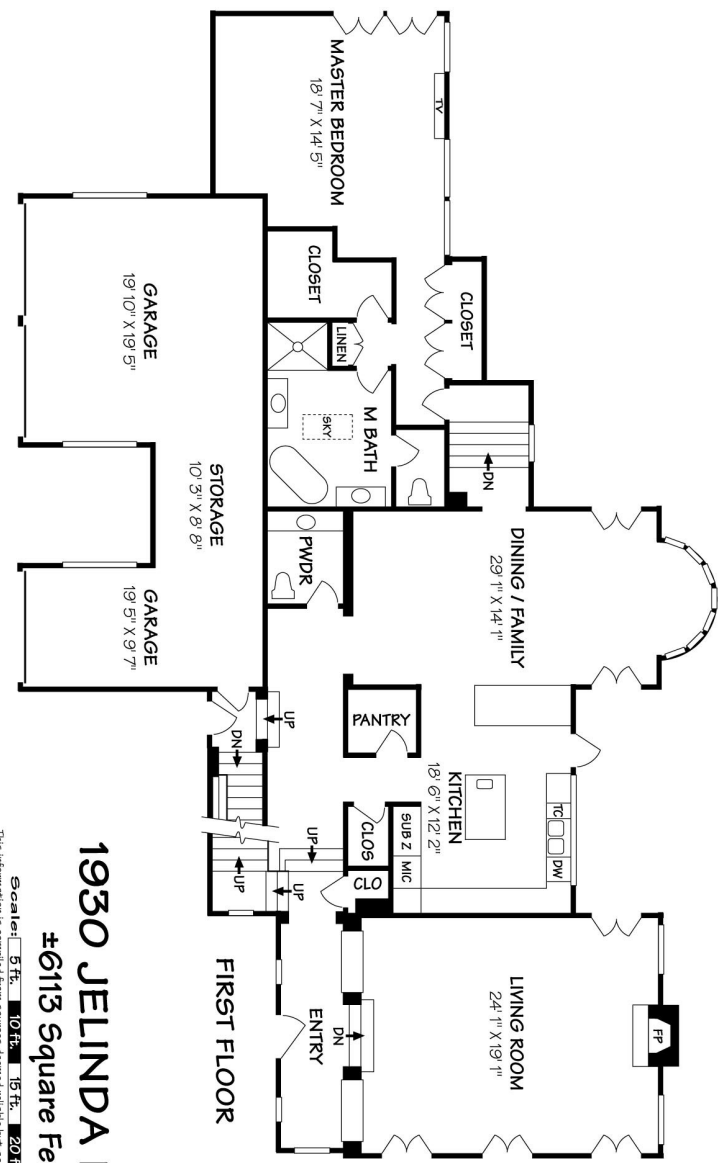


**1930 Jelinda Drive**  
**Montecito, California**  
*Offered at 3,595,000*



**1930 JELINDA DRIVE**  
**#6113 Square Feet**

Scale: 5 Ft., 10 Ft., 15 Ft., 20 Ft., 25 Ft.  
 This information is compiled from sources deemed reliable but accuracy is not guaranteed.  
 David Heideberger • Design & Graphics • 805-965-4957 • Gailita Barbara

<b>Entry</b>		Custom wood paneled and beveled glass door opens to the gracious foyer that creates a sense of transition and warmth with barrel coved ceilings and hardwood floors
<b>Living Room</b>	<b>19.1 X 24.1</b>	This elegantly detailed and proportioned room enjoys a beautiful fireplace with Antique French stone surround, oak floors and tall-boxed beam ceilings, in-wall speaker system. Two arched open niches with limestone surface allow light from the foyer. Four sets of French doors open to a large flag stone tiled terrace with golf course and mountain views
<b>Main Gallery</b>	<b>6 X 21</b>	From the foyer, the gallery with arched and parquet floors leads to the kitchen, dining/family and the powder room. There is also convenient access from a service entry and the garage
<b>Powder Room</b>		At the end of the gallery, the powder room with custom details is well placed and convenient
<b>Kitchen</b>	<b>12.2 X 18.6</b>	This wonderful chef's delight enjoys large center island, Viking Range, Sub-Zero Refrigerator, Bosch dishwasher, Viking Wine Cabinet, trash compactor, limestone counters, custom cabinetry and in-wall speaker system. Large walk-in pantry and additional storage closet, bar seating and Dutch door access to flagstone patio with built-in BBQ center. Magnificent views of the Valley Club, golf course/Clubhouse and mountains beyond
<b>Dining/ Family Room</b>	<b>14.1 X 29</b>	With a floor-to-ceiling Conservatory window flanked by two sets of French doors, all showcasing the golf course fairway and mountain views, this room invites either the casual use of indoor/outdoor entertaining between the terrace and garden or formal evenings. There is an adjoining sitting room with Plasma television, in-wall speaker system, domed ceiling and parquet floors
<b>Master Suite</b>	<b>14.5 X 18.7</b>	Vestibule entrance with limestone floors steps down to the bedroom suite. This gracious room has planked hardwood floors, high-beamed ceilings, custom lighting, French doors to flagstone patio, Plasma television, in-wall speaker system and glass picture windows with garden, mountain and Valley Club views. Two double wardrobe closets, spacious walk-in closet and linen closet

<b>Master Bathroom</b>	10 X 11	Limestone heated floors and tiled walls, vaulted ceilings with skylight, in-wall speaker system, Limestone walk-in shower and freestanding soaking tub, double vanities and separate commode room
<b><u>Second Floor</u></b>		
<b>Library/Media Room</b>	18 X 21.4	Lightly finished wood paneled walls with built-in fireplace with limestone hearth, bookcases and extensive storage cabinetry. Plasma television, oak floors and three sets of French doors to tiled terrace for relaxing and viewing the Valley Club fairway and mountain views
<b>Bedroom Suite</b>	14.3 X 16.11	Light and bright with bay window seat, coved ceiling, rounded hearth fireplace and spacious 15 X 17 adjoining bath with mirrored walk-in closets, dressing area and leaded windows
<b>Bedroom Suite</b>	15.11 X 19.3	Graceful entry to this suite with coffered ceiling, inviting fireplace and three sets of French doors that open to two separate balconies and the terrace of the library. Beautifully appointed limestone bath with walk-in shower and large closet
<b>Loft Retreat</b>	18 X 18	This sunny and private retreat is a perfect hideaway for an office or hobby room with oak floors, high paneled ceilings and French doors to an exterior deck with spectacular viewing of the ever-changing mountains. There are two extra rooms, one is 8.5 X 11.6 and the other is 13.5 X 26.9, an ideal playroom
<b><u>Lower Level</u></b>		
<b>Vestibule</b>	12 X 12	At the base of the stairway with limestone floors with large storage closet
<b>Laundry Room</b>	5 X 8	Custom designed with glass-seeded doors, limestone floors and counters and ample storage cabinetry
<b>Recreation Room</b>	13.6 X 26.2	Carpeted flooring, ceiling fan and mirrored wall. Large walk-in cedar lined closet and mechanical closet within the room
<b>Guest Bedroom Suite</b>	11.9 X 17.7	This inviting room has private access from the back garden, spacious closet, crown molding and 6 X 12 limestone bath with walk-in limestone steam shower
<b>Garage</b>		Spacious three-car garage with separate overhead doors, along with workshop and storage area

### **Additional Features**

- Numerous rooms with in-wall sound system with speaker controls
  - Extensive Outdoor Lighting
  - Central Vacuum system
  - Cox Cable wireless internet
    - Four fireplaces
  - Automated Sump Pump System
    - Private Home Generator
- Professionally Landscaped Gardens with irrigation
  - Outdoor Built-in BBQ

